



INTEGRATING TEACHING, RESEARCH / CREATIVE ACTIVITY & SERVICE THROUGH CE SCHOLARSHIP

SPEAKERS:

Emily Janke, Patti Clayton & Laura Gonzalez

Emily Janke, Ph.D. is the UNCG Director of the Institute for Community and Economic Engagement and Associate Professor of Peace and Conflict Studies

Laura Gonzalez, Ph.D. is the Assessment Coordinator and Co-Founder, One Journey Together, LLC. She has been an Associate Professor in the School of Education, a Research Fellow with the Center for New North Carolinians and has received a faculty fellowship with NC Campus Compact in order to develop SoMuchPotential.org.

Patti Clayton, Ph.D. is an independent consultant (PHC Ventures) with over 20 years of experience as a practitioner-scholar and educational developer in service-learning and community engagement (SLCE) and in experiential education. In addition to her Senior Scholar role with the Institute, she serves as a Senior Scholar with the Center for Service and Learning at IUPUI and as Practitioner-Scholar-in-Residence with NC Campus Engagement.



COMMUNITY ENGAGEMENT IS A UNCG STRATEGIC PRIORITY

How can we weave CE through our work roles to ensure high quality scholarship and partnerships?



STRATEGIC FRAMEWORK



VISION

- As a public research university, our vision is to be a national model for how to blend access and excellence to transform students, the institution, and the community.



INSTITUTIONAL VALUES

- Equity, Diversity, + Inclusion
- Transparency
- Collaboration
- Shared Fate



STRATEGIC PRIORITIES

- Investments in Distinction
- Integrated Student Success
- Drive and Manage Enrollment
- Community Engagement



PRINCIPLES FOR DECISION MAKING

- Build to Strength
- Tipping Point
- First to Market



RESOURCES

- Talent
- Technology
- Financial
- Physical Plant

DEFINITIONS



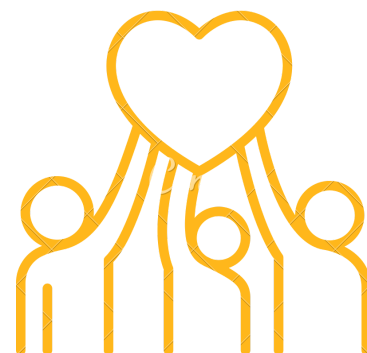
Community Engagement describes the collaboration between higher education institutions and their larger communities (local, national, global) for the mutually beneficial exchange of knowledge and resources in a context of partnership and reciprocity.
(Carnegie Foundation)

Key Principles: A partnership between community & university partners that is:

- mutually beneficial
- reciprocal
- asset-based

DEFINING SCHOLARSHIP, INCLUSIVELY

applied to ALL scholarly
work



“Scholarship is characterized by creative intellectual work based on a high level of professional expertise, the significance of which can be validated by peers and which enhances the fulfillment of the mission of the University. Scholarship is not considered to be synonymous with research, but can be demonstrated by activities in teaching, research and creative activity, service, and directed professional activity.”

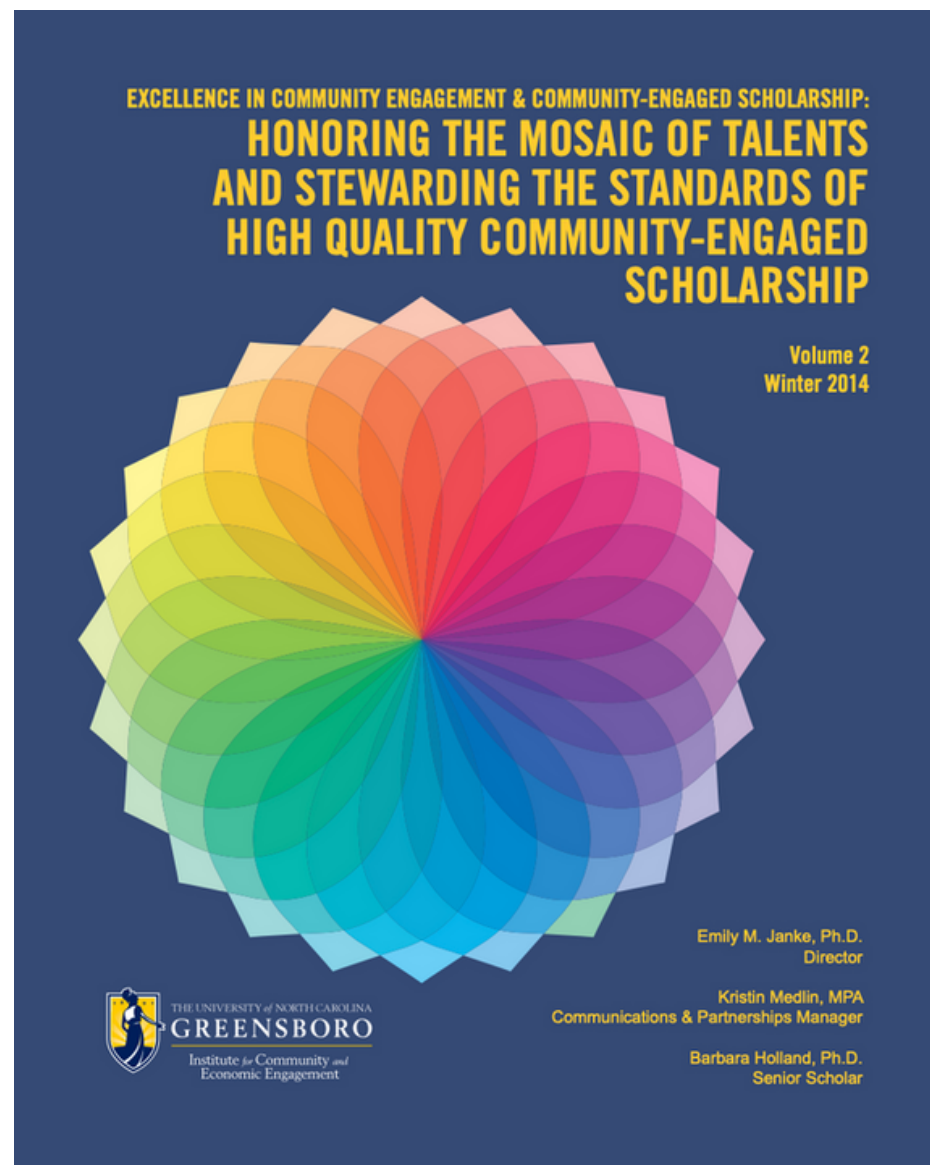


TEACHER- SCHOLAR MODEL

“The primary function of the University is teaching. Research and creative activity, service, and directed professional activity, while important to the life of the University, do not have the central importance of teaching” (UNCG Promotion and Tenure Guidelines, 2009, Section II.A.).

THREE BUCKET PROBLEM

Community Engagement is integrated into each of the three "buckets," yet the buckets are often still, structurally and practically, distinct.



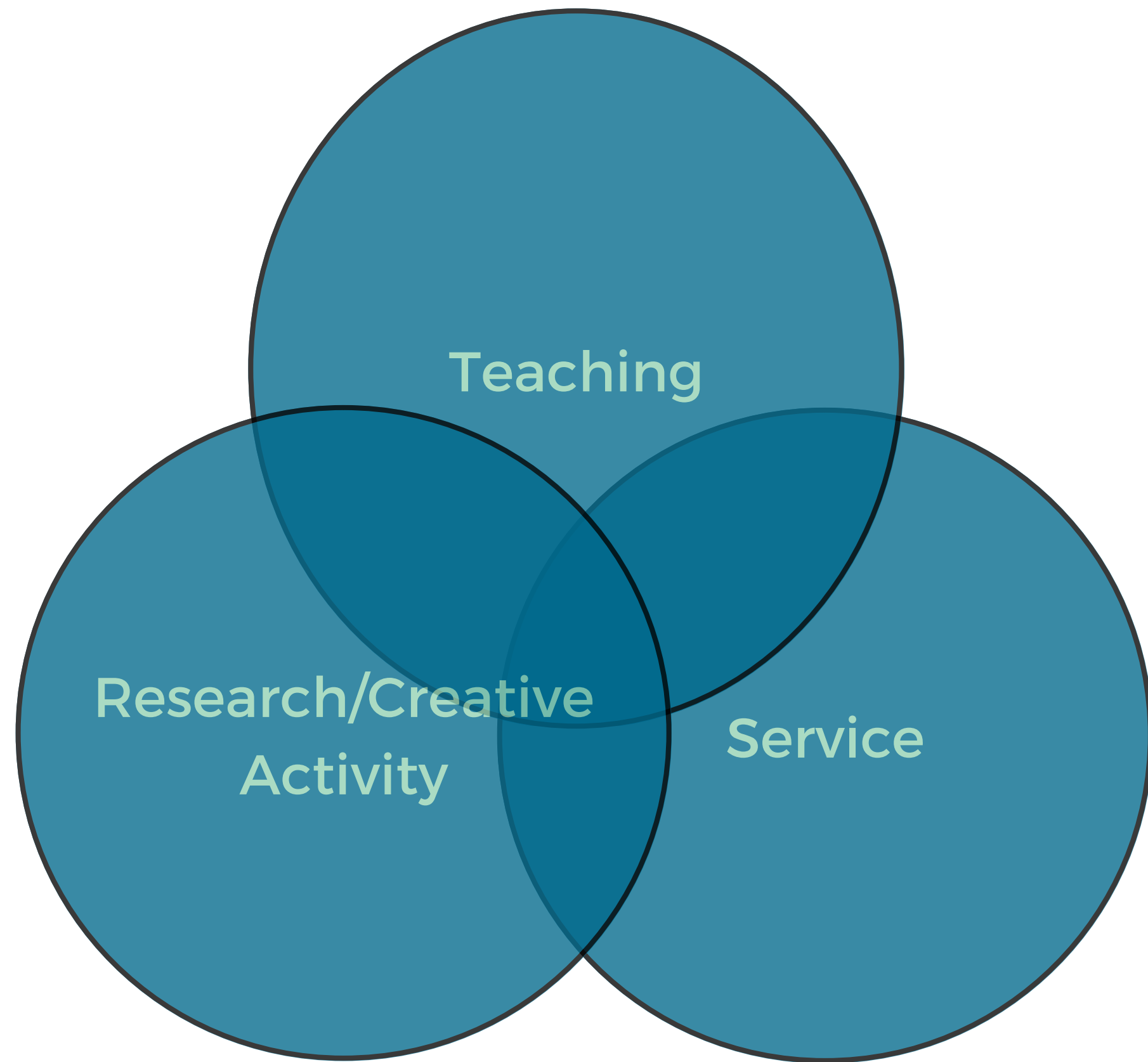
Teaching

Research/
Creative
Activity

Service

Considerations:

- practical / logistical
- partner / relationship
- peer / regard



INTEGRATION

Faculty frequently accomplish
multiple work roles
simultaneously

CONTACT US!

communityengagement@uncg.edu

RESOURCES ONLINE:
communityengagement.uncg.edu

